



Tortugero Lagoon Natural Reserve



The reserve

Characteristics

Imágen de Satélite de la Reserva Natural Laguna Tortuguero

This reserve is constituted by:

- marshes

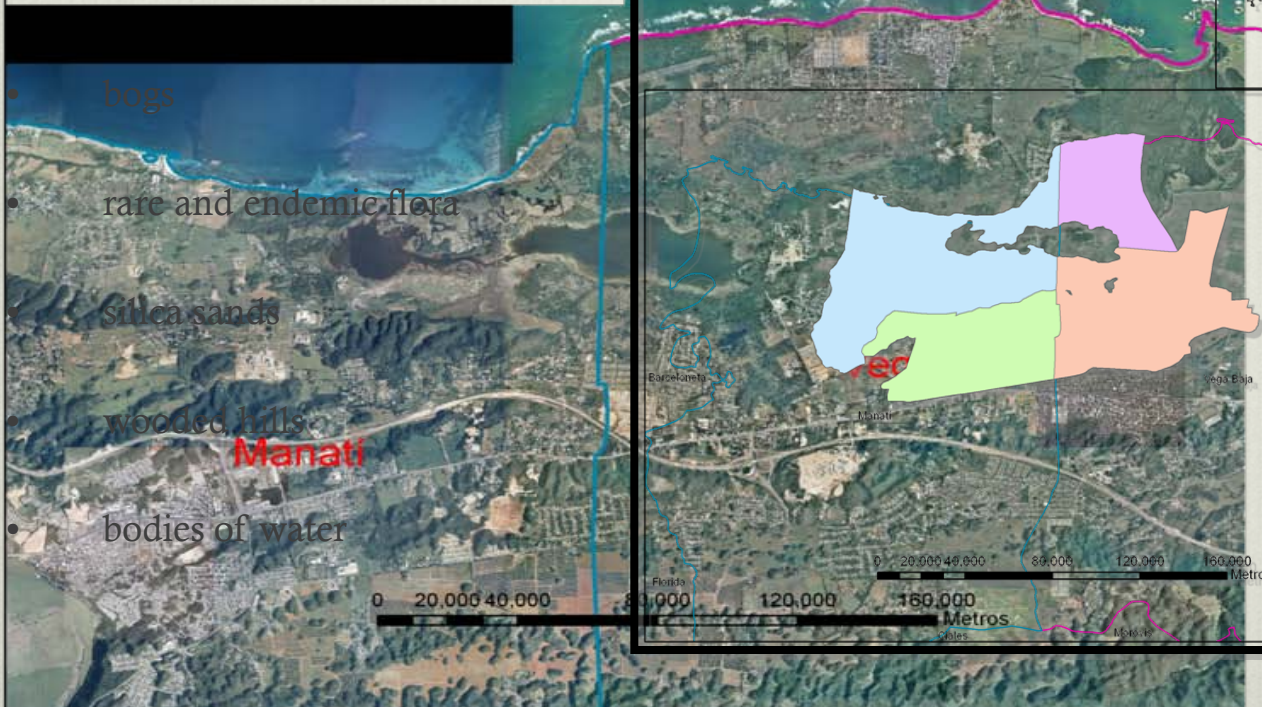
bogs

rare and endemic flora

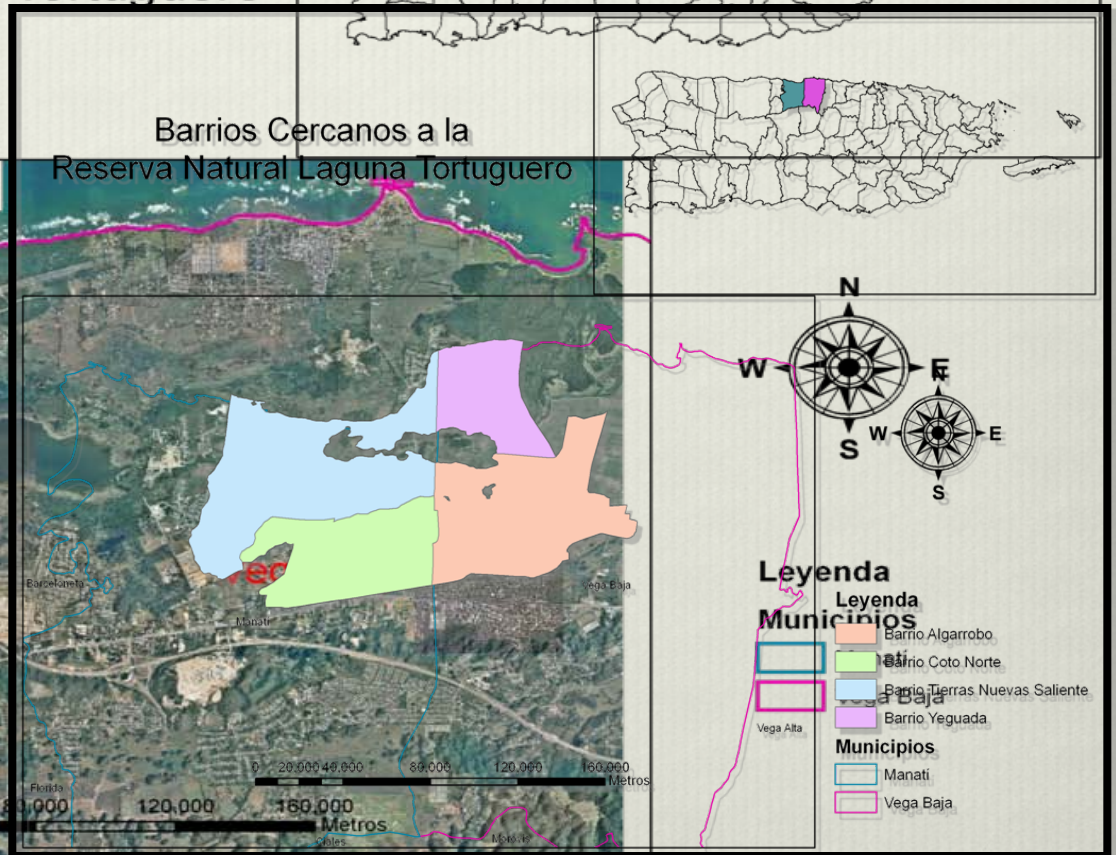
silica sands

wooded hills
Manati

bodies of water



Barrios Cercanos a la Reserva Natural Laguna Tortuguero



Leyenda

Leyenda Municipios

- Barrio Algarrobo
- Barrio Coto Norte
- Barrio Tierra Nuevas Saliente
- Barrio Yeguada
- Municipios
- Manati
- Vega Baja

Objectives



- ❖ To compile history and data on Tortuguero and the surrounding communities
- ❖ To identify stakeholders
- ❖ To identify the activities and uses of the Tortuguero Natural Reserve
- ❖ To identify critical issues related to the manage of the reserve

The stakeholders

Who are they?

- ❖ Recreational fishermen
- ❖ Municipal Government
- ❖ Cyclists
- ❖ Walkers
- ❖ Nearby community / residents

Research techniques

- ❖ Focus Group
- ❖ Field Observations
- ❖ Survey Resource Users
- ❖ Secondary Sources:
history books,
management plans,
census, land used plan,
master & PhD. thesis

The communities

❖ Comunidad Laguna

❖ Vega Baja Lakes

❖ Guayaney

❖ Guanico Viejo

Communities

❖ Yeguada, Vega Baja

❖ has a total population of 1, 586 and 480 household units.

❖ Algarrobo, Vega Baja

❖ has a total population of 16, 444 and 5, 338 house hold units.

❖ Puerto Nuevo, Manatí

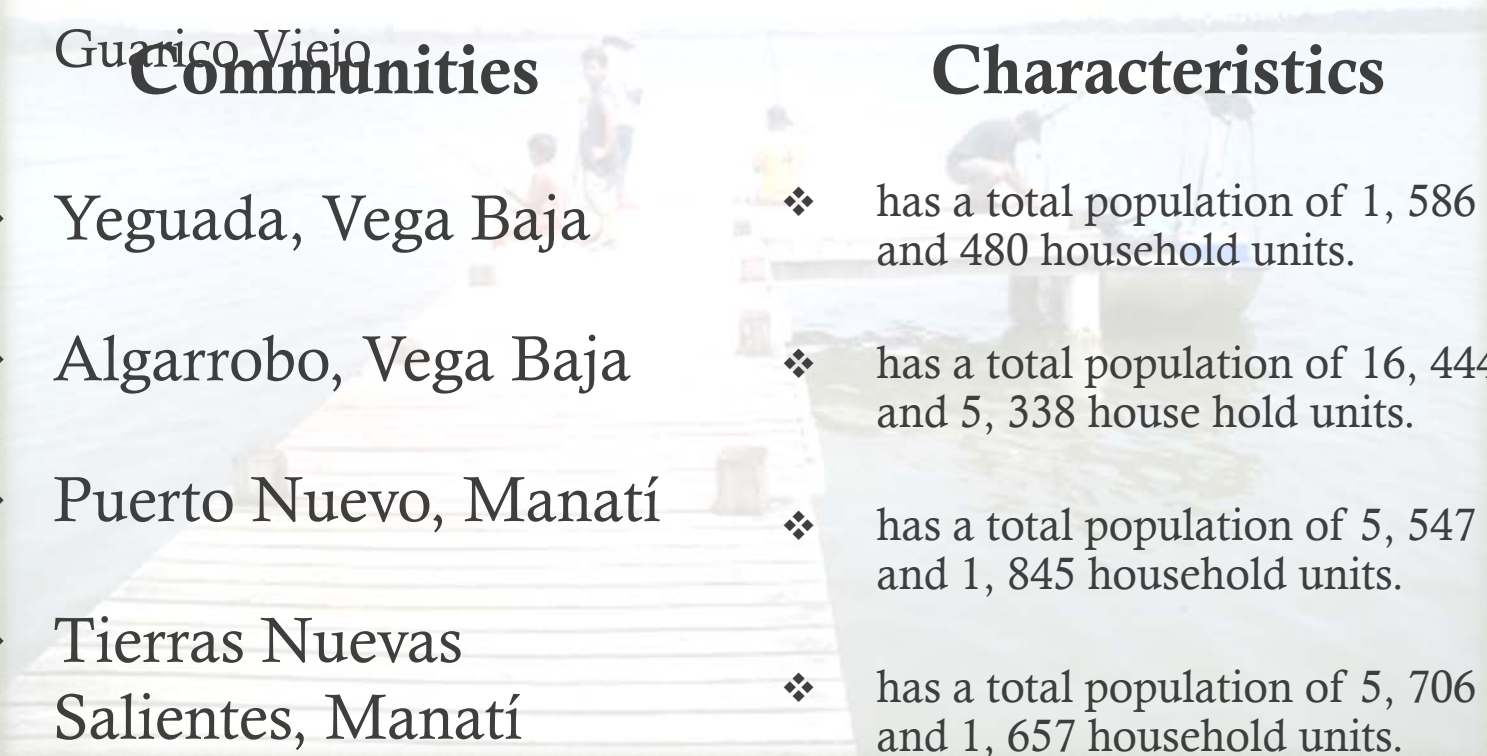
❖ has a total population of 5, 547 and 1, 845 household units.

❖ Tierras Nuevas

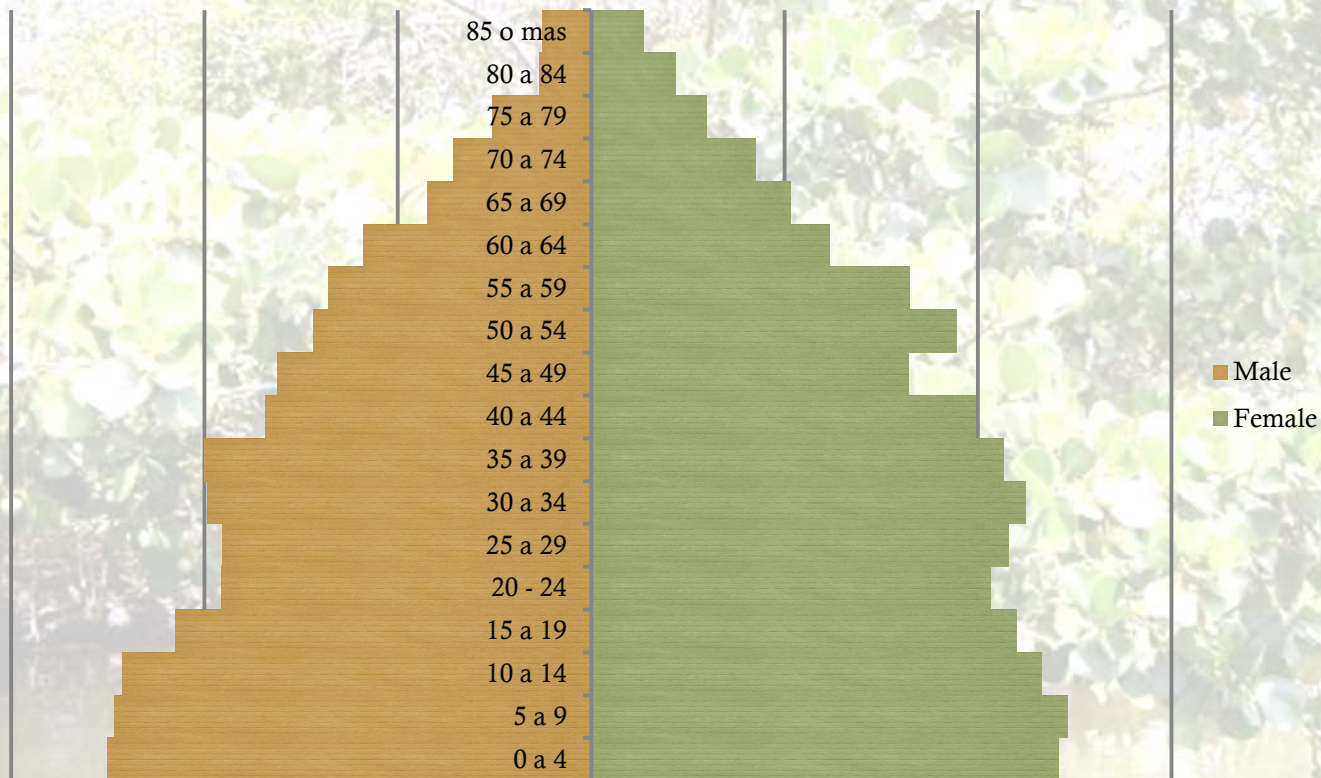
❖ has a total population of 5, 706 and 1, 657 household units.

Salientes, Manatí

Characteristics



Demographics



Population by age and sex of the districts Yeguada, Algarrobo, Puerto Nuevo y Cabo Caribe

History of the site

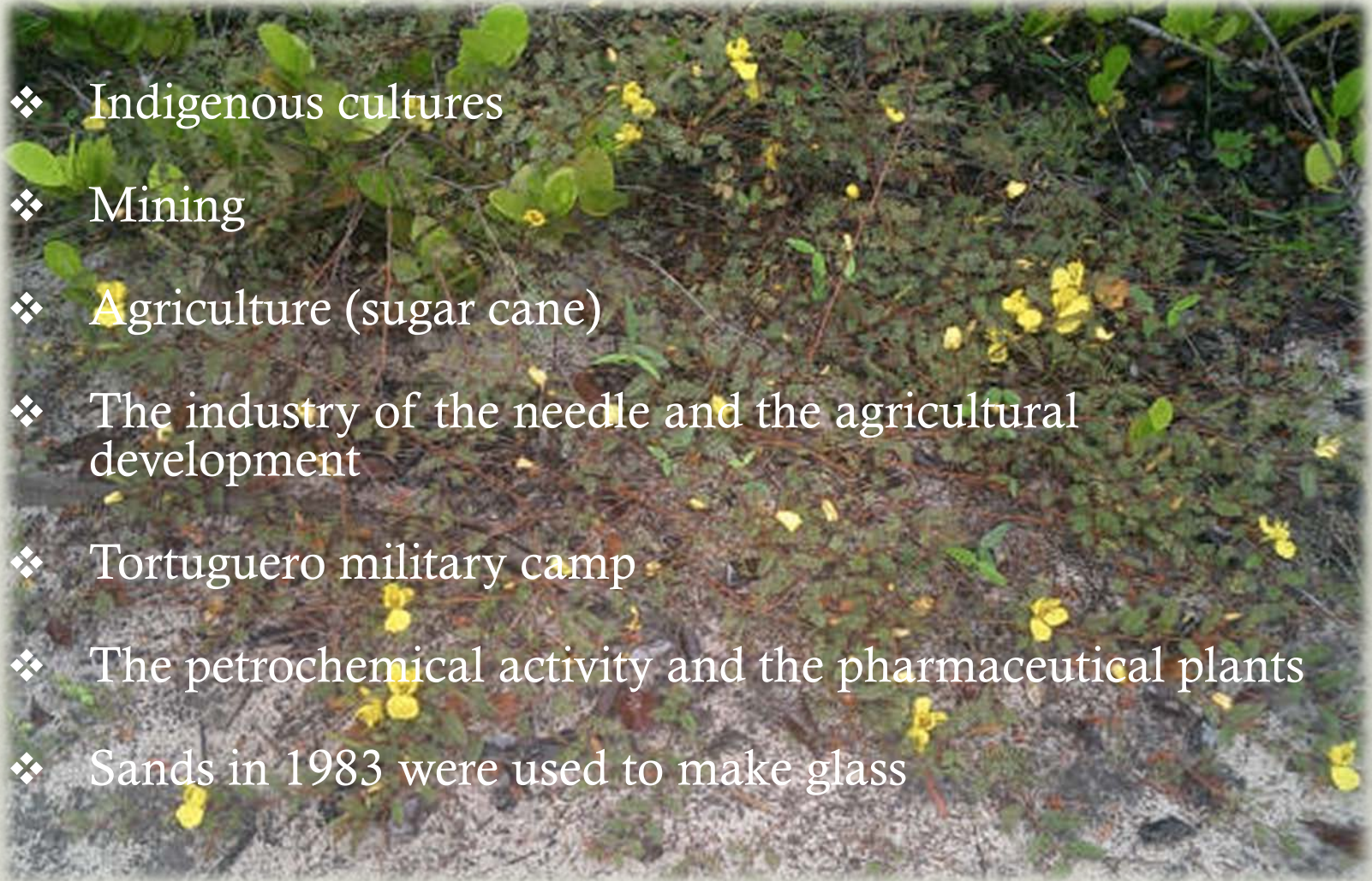
Sources

- ❖ Archaeological findings: in 1981 indigenous artifacts were found near Vega Baja's town.
- ❖ Laguna Tortuguero is one of the most important bodies of fresh water in Puerto Rico.



Land use patterns

- ❖ Indigenous cultures
- ❖ Mining
- ❖ Agriculture (sugar cane)
- ❖ The industry of the needle and the agricultural development
- ❖ Tortuguero military camp
- ❖ The petrochemical activity and the pharmaceutical plants
- ❖ Sands in 1983 were used to make glass

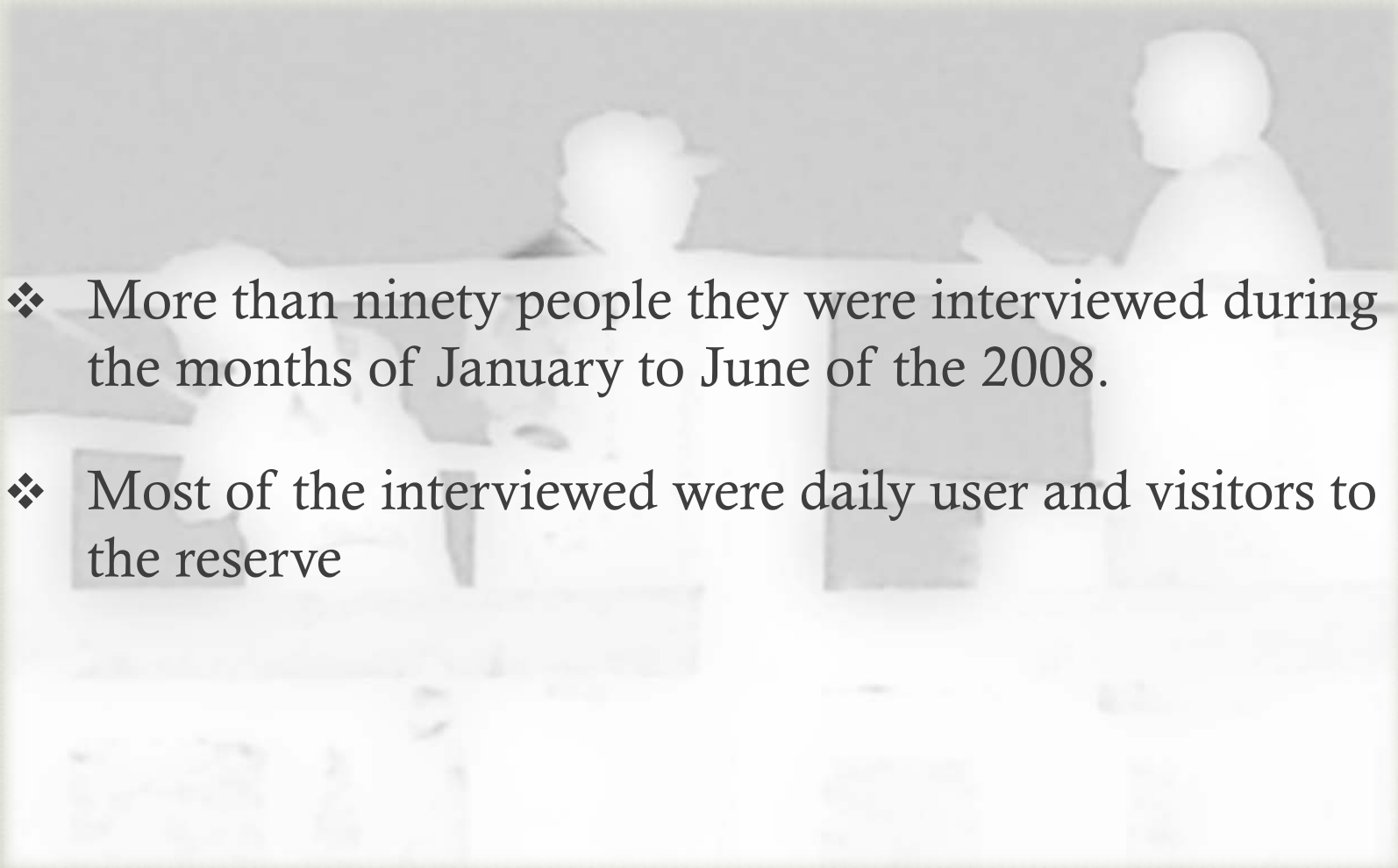


Resource use: Observations

- ❖ The most common activities observed in the Reserve were:
 - ❖ Exercises (to walk - to run)
 - ❖ Cycling
 - ❖ Recreational fishing
 - ❖ Passive recreation
 - ❖ Picnic

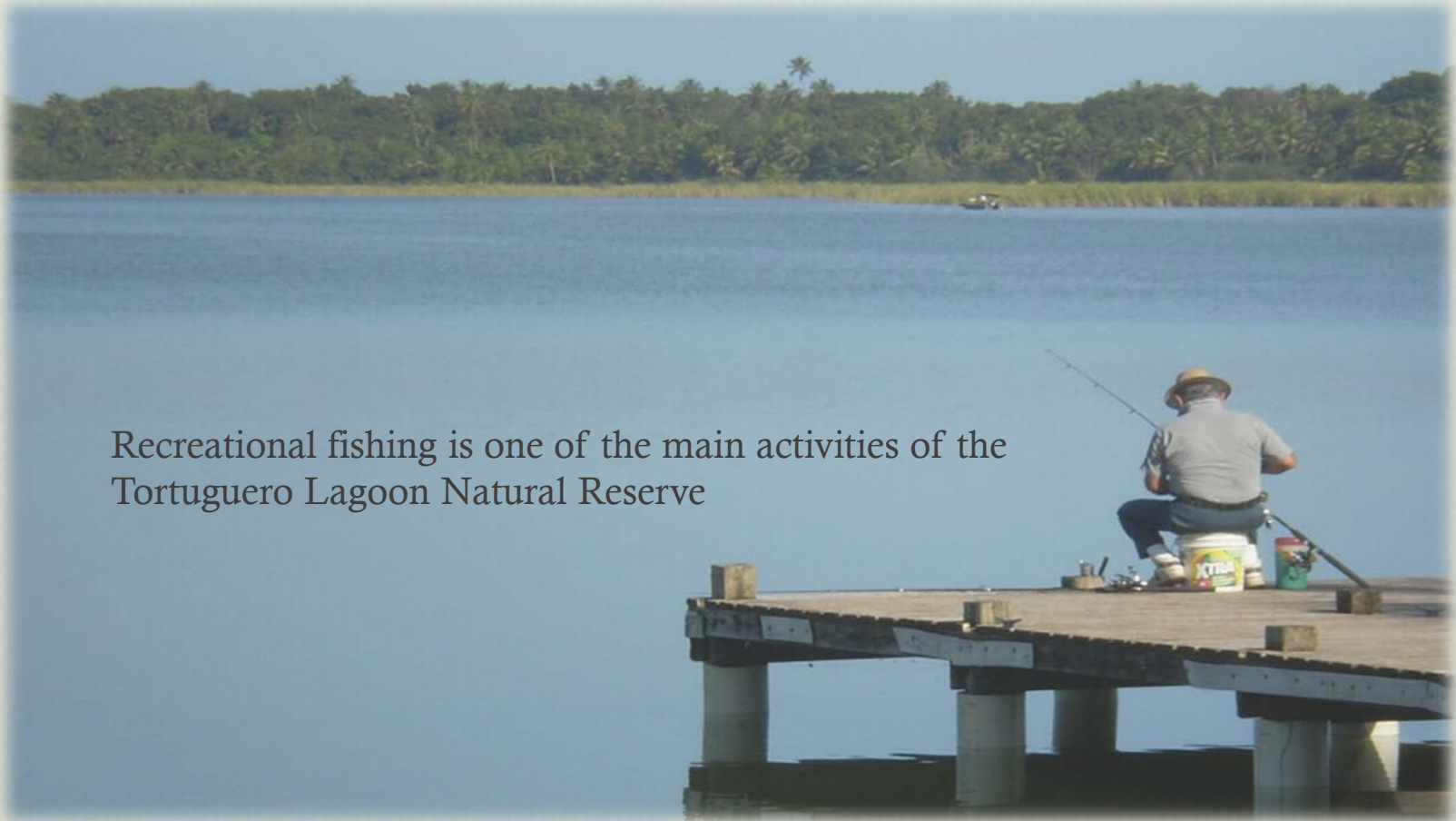
- ❖ The majority of the users observed were women. And the average of age were young adults from 19 to 30 years old.

Resource use: Surveys

- 
- ❖ More than ninety people they were interviewed during the months of January to June of the 2008.
 - ❖ Most of the interviewed were daily user and visitors to the reserve

Fishing activities

Recreational fishing is one of the main activities of the Tortuguero Lagoon Natural Reserve



SocMon and management

Preliminary Recommendations

To develop strategies to integrate the near communities

- To develop a program with young people who can serve as tour guides
- Kayaks for rent
- To sell devices for the recreational fishing like baits, hooks, cord

Education

- Developed signage on habitats, resources and historical information
- To promote the scientific research

SocMon Team

